

Elab Fluor® Red 780 Anti-Human/Monkey HLA-DR Antibody[L243]

Catalog Number: E-AB-F1111S

Note: Centrifuge before opening to ensure complete recovery of vial contents.

Description

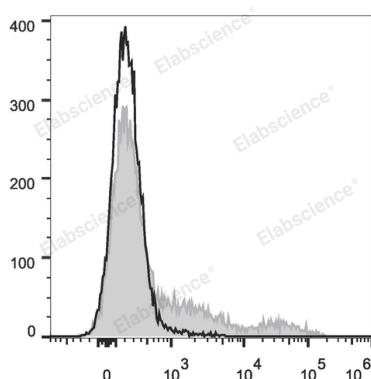
Reactivity	Human;Rhesus
Host	Mouse
Isotype	Mouse IgG2a, κ
Clone No.	L243
Isotype Control	Elab Fluor® Red 780 Mouse IgG2a, κ Isotype Control[C1.18.4] [Product E-AB-F09802S]
Conjugation	Elab Fluor® Red 780
Conjugation Information	Elab Fluor® Red 780 is designed to be excited by the Red (627-640 nm) laser and detected using an optical filter centered near 770 nm (e.g., a 780/60 nm bandpass filter).
Storage Buffer	Phosphate buffered solution, pH 7.2, containing 0.09% stabilizer.

Applications

Recommended usage

FCM Each lot of this antibody is quality control tested by flow cytometric analysis. **The amount of the reagent is suggested to be used 5 μL of antibody per test (million cells in 100 μL staining volume or per 100 μL of whole blood).** Please check your vial before the experiment. Since applications vary, the appropriate dilutions must be determined for individual use.

Data



Human peripheral blood cells are stained with Elab Fluor® Red 780 Anti-Human/Monkey HLA-DR Antibody (filled gray histogram). Unstained peripheral blood cells (blank black histogram) are used as control.

Preparation & Storage

Storage	Keep as concentrated solution. This product can be stored at 2-8°C for 24 months. Please protected from prolonged exposure to light and do not freeze.
Shipping	Ice bag

Antigen Information

Alternate Names	DRA/DRB1;HLA class II histocompatibility antigen DR alpha/ DRB1-15 beta chain;HLA-DRA1/DRB1;MHC class II antigen DRA
Uniprot ID	P01903;P01911
Gene ID	3122;3123

For Research Use Only

Background

HLA-DR is a heterodimeric cell surface glycoprotein comprised of a 36 kD α (heavy) chain and a 27 kD β (light) chain. It is expressed on B cells, activated T cells, monocytes/macrophages, dendritic cells, and other non-professional APCs. In conjunction with the CD3/TCR complex and CD4 molecules, HLA-DR is critical for efficient peptide presentation to CD4+ T cells.